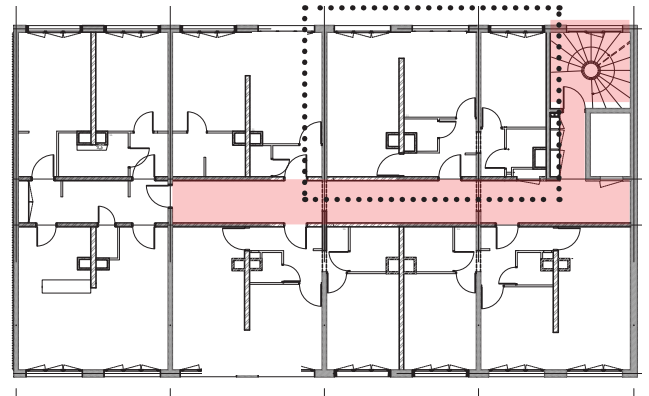




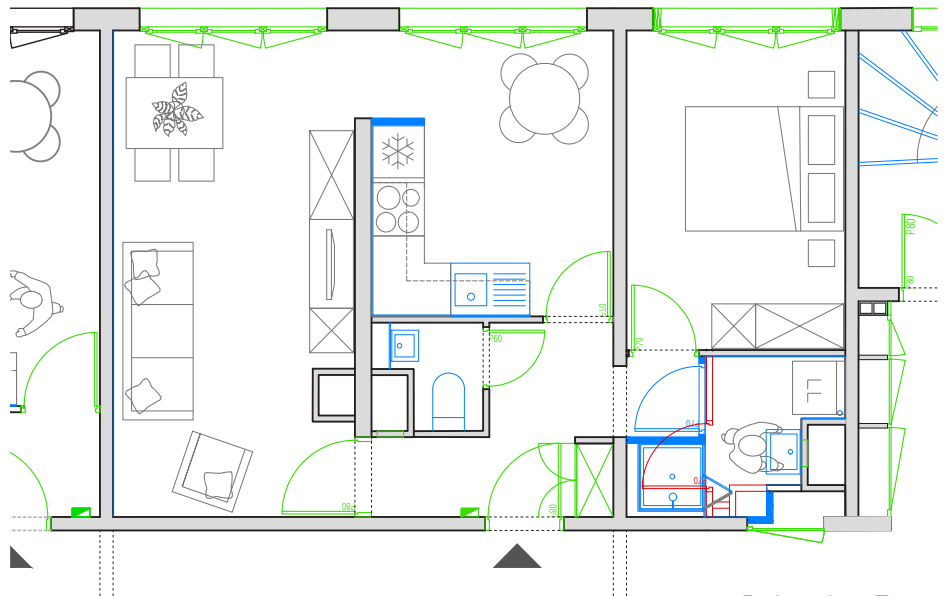
The building in its environment



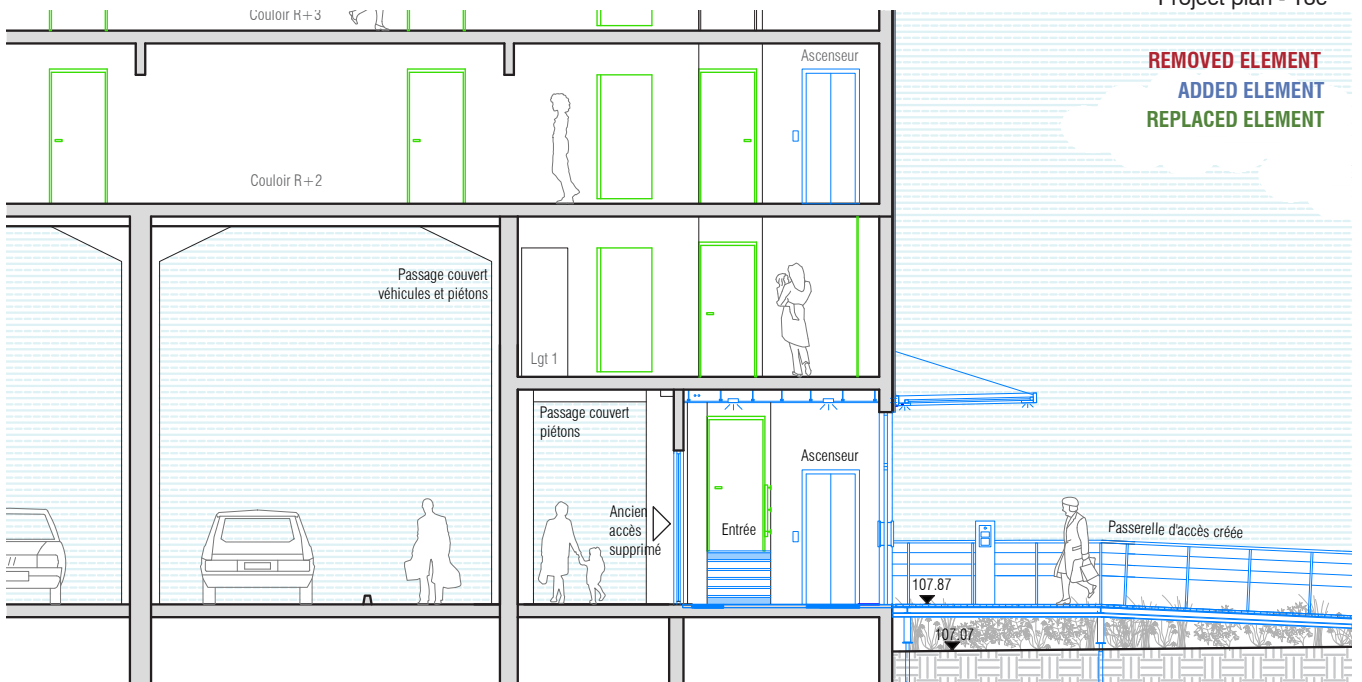
Commun floor plan

Refurbishment of common and private areas.

The 16-unit building is located in the Bois l'Abbé district, which undergoing an urban renewal by ANRU. The project includes the modification of the entrance, which currently opens onto a low-value covered passage, to an access by footbridge via the garden of the residence. The common areas benefit from a qualitative renovation with a focus on the design. The flats will all be rehabilitated with a total redesign of damp rooms, some of which are too small. We offer an interior redevelopment with a realization of tailored furniture (storage, counters).



Project plan - T3c



Turnaround of the hall access and creation of a PRM wood-metal walkway on micropiles.

Call for Tenders
 Surface: 16 flats
 Construction: (8 months)
 Client: Paris Habitat
 Location: 3 place Rodin, 94500 Champigny-sur-Marne
 Program: Refurbishment of an apartment building.
 Mission: Complete mission

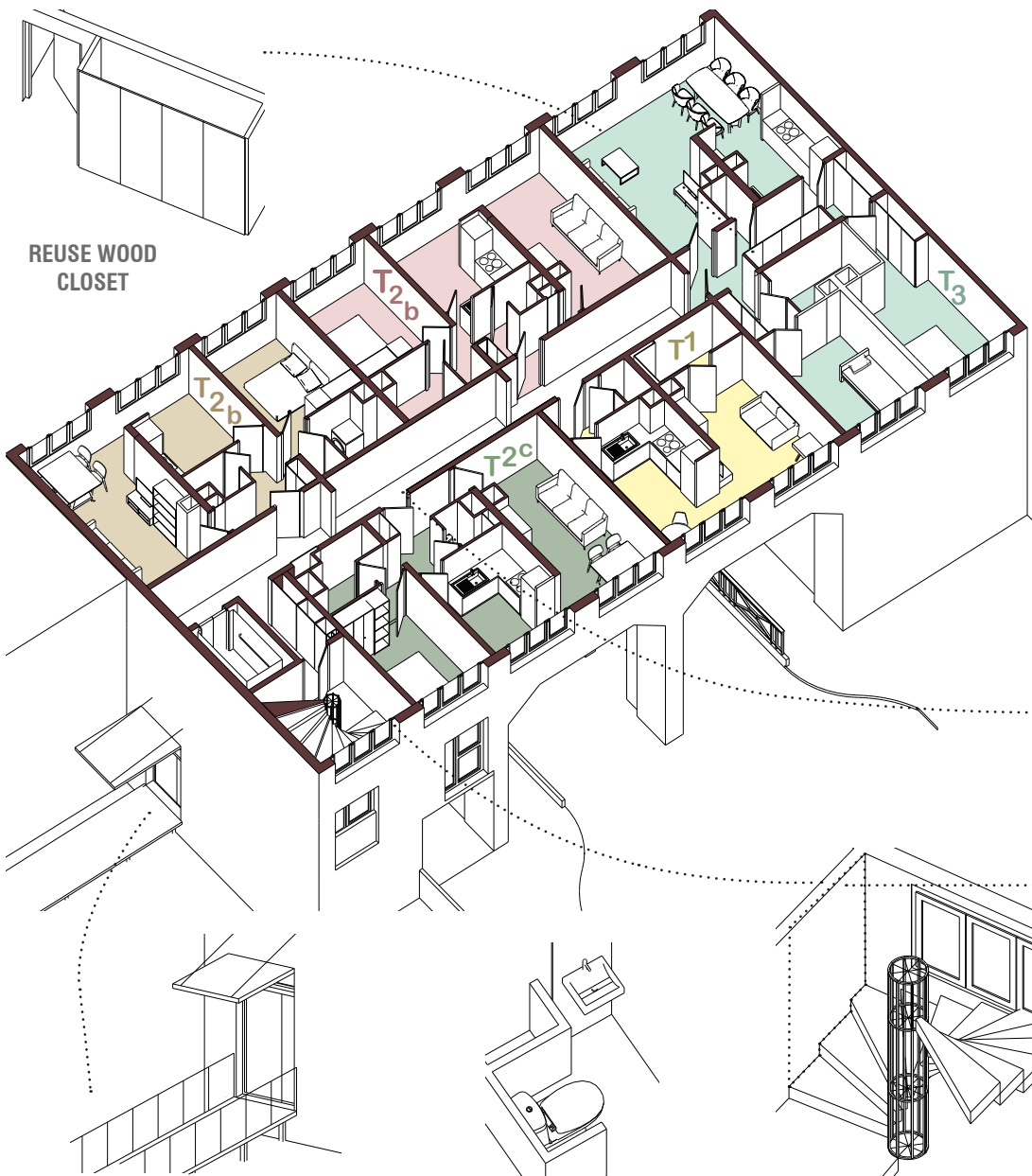
Phase PRO
 Building costs BT: 600 k€
 Completion: (2023)

SQ CH. D'ORLEANS - PARIS HABITAT (94)

Refurbishment of an apartment building - Champigny-s/M 2021

RETHINK (Representative)





REUSE WOOD CLOSET

BATHROOM MATERIALS

KITCHEN MATERIALS

CORRIDOR MOSAIC PRESERVED

WOODEN WALKWAY CREATED

REUSE BATHROOMS

EARTHENWARE DECORATION IN STAIRCASES

Ambiances & materials

The interventions on the floors include the renovation of the central corridor with its enhancement through the choice of ambiances (materiality, lighting, colors...). In the housing, the floors are replaced, the kitchens and bathrooms are renovated: replacement of sanitary equipment and redevelopment.