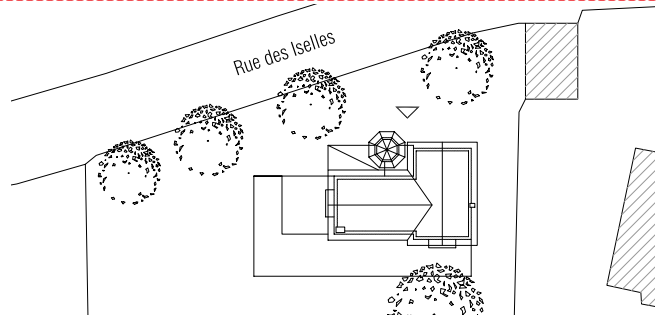
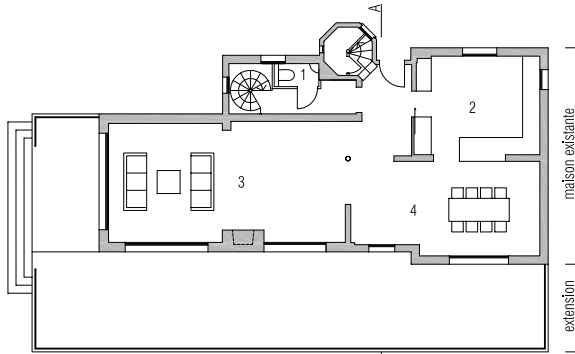


Restructuring and extension of a house

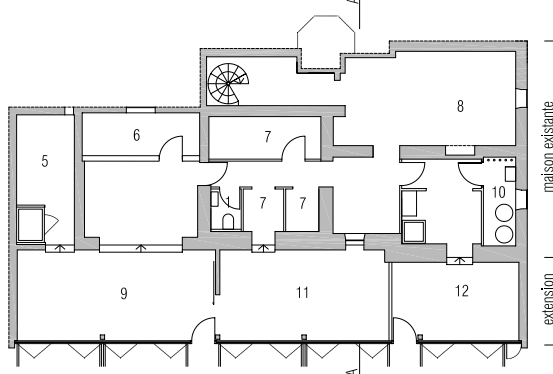
The site is located south of the train station of Villennes sur Seine and develops itself in an east-west direction between the rue des Iselles and the railroad which follows the river Seine. The clients wanted to increase the surface of the house while preserving its form and the facade towards the street. The slope of the site makes it possible to extend the basement on garden side and open it with a continuous glass facade towards the vegetation. This new volume shelters a guest room, an office and a fitness room. A renovation of the facade will unify the different volumes of the house and will allow recovering its original appearance in two colors..



Mass Plan



Ground floor



Level -1

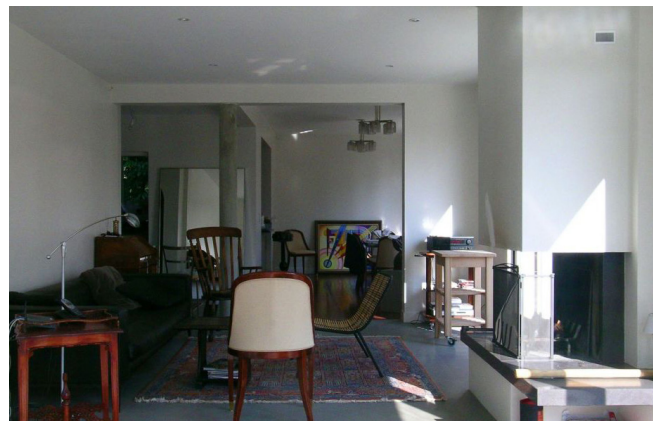
- 1 Sanitaire
- 2 Cuisine
- 3 Salle de séjour
- 4 Salle à manger
- 5 Sauna
- 6 Cave à vin
- 7 Rangement
- 8 Buanderie
- 9 Fitness
- 10 Technique
- 11 Bureau
- 12 Chambre



Facade facing the garden with wooden shutters



Facade facing the garden



Living Room



Entrance

Direct order  
 Surface: 300+60 m<sup>2</sup>  
 Const. time: 8 months  
 Client: Privat  
 Location: F-75008 Paris  
 Programme: Renovation, extension of a house  
 Mission: Project, tender offers + survey

Project  
 Building costs BT: 500 k€  
 Completion: 2007



**LES FAUVETTES HOUSE**  
 Restructuring and extension of a house - Paris 2005

Rethink (representative)

