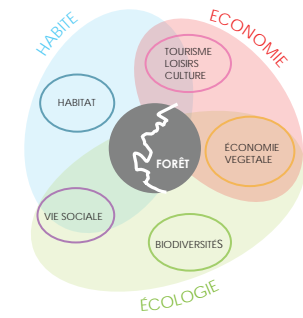


A new landscape for the plain of Pierrelaye

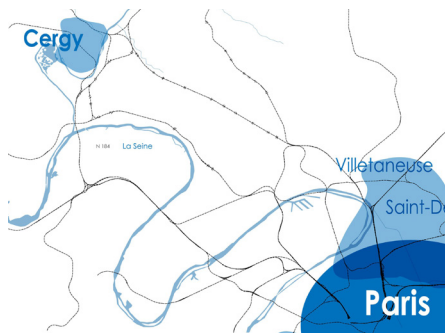
The forest is both, the operational point of departure and the central argument of the proposed development of the plain in its dimensions of program and use. The plain is a disregard and abandoned space. 2017 will be the year of the end of the irrigated crops and the removal of agricultural activity. In this crisis, the planting of a forest of 1000 ha is a response to the empty space and the lack of functions that characterize the plain today. However, the project of the forest alone is not enough to create the conditions for the regeneration and a positive appropriation of the plain.

The network and connections are a second tool to restore the plain:

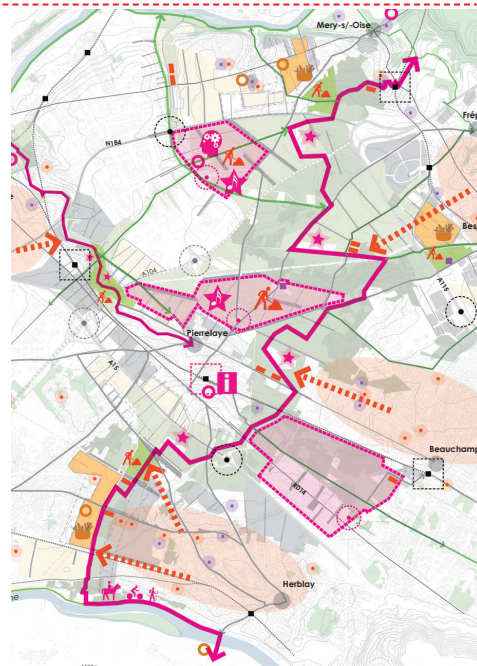
- by allowing and facilitating the access to the site;
- by the synergy of existing and future facilities, local and metropolitan interest, present today or that the Plain will accommodate in the future



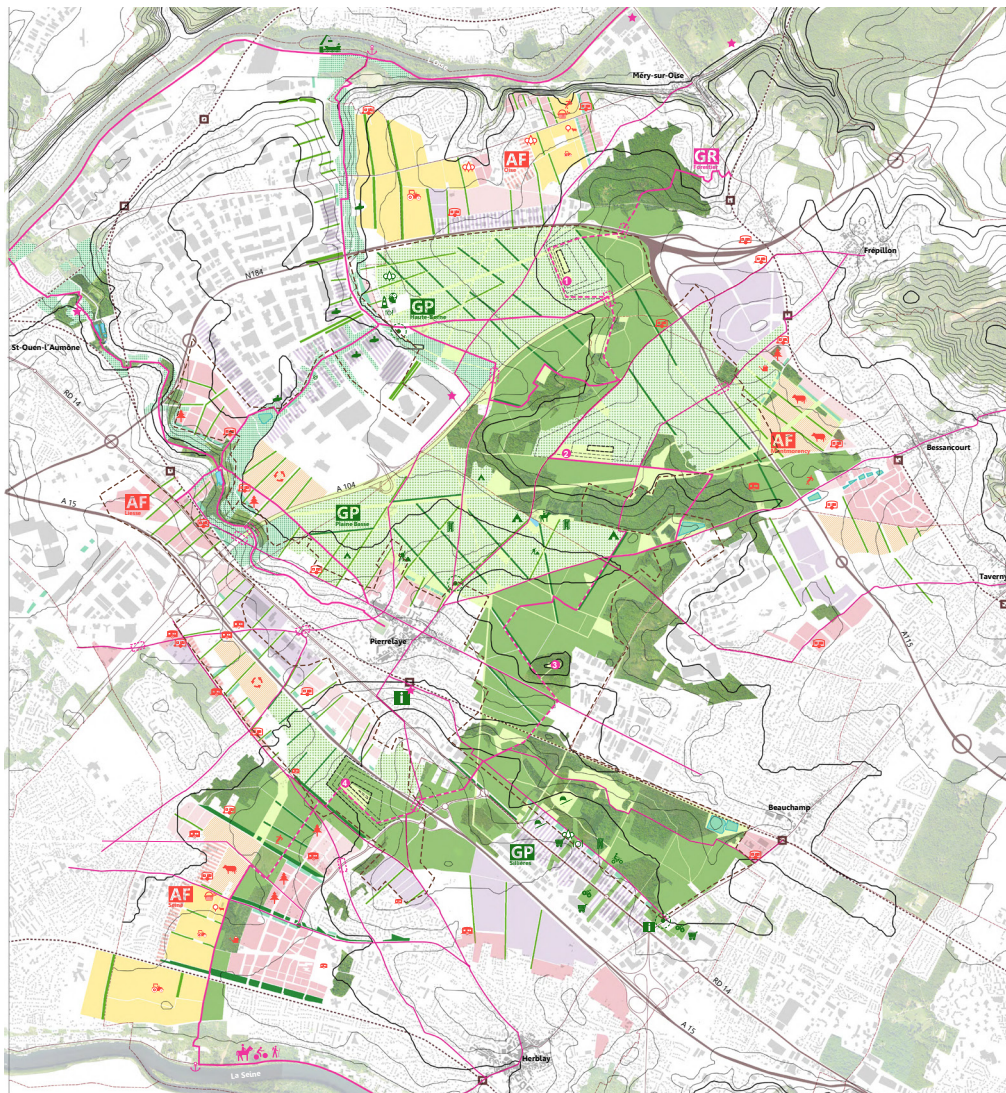
Concept logo



Situation in the Paris region

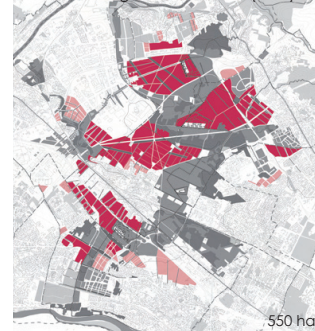


Main projects for social integration



Overall guide plan for the development of the forest and the surrounding cities

PHASE 1 : Emergence de la forêt (7ans)



550 ha

PHASE 2 : Déploiement de la forêt (15 ans)



150 ha

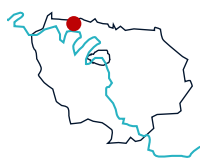
PHASE 3 : Maturité de la forêt (50 ans)



90 ha

Planting of the forest in time

Call for tender: Territorial study
 Surface: 2000 ha Planning fees BT: 150 k€
 Planning time: 24 months Completion: 2014
 Client: DDT Val d'Oise
 5 av Bernard Hirsch F-95010 Cergy-Pontoise
 Location: Plain of Pierrelaye-Bessancourt
 Programme: Territorial development
 Mission: Definition of operational principles

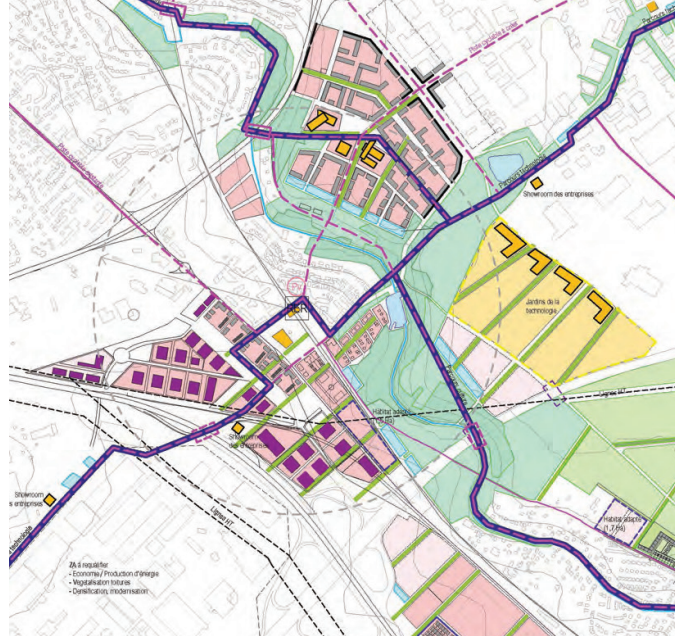
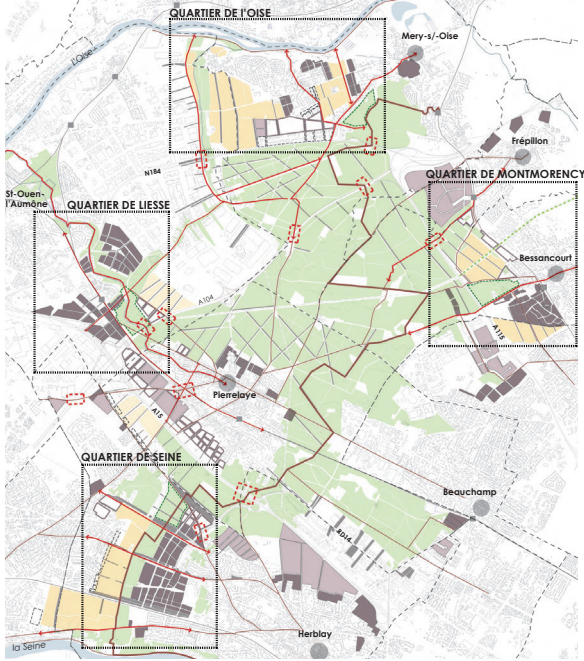


PLAIN OF PIERRELAYE - IDF

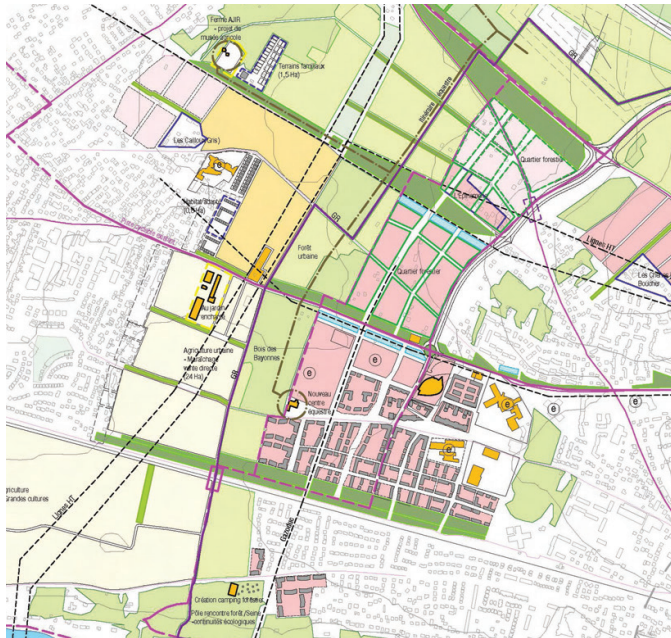
Operational planning principles- Val d'Oise 2013

Rethink with MTA (representative), landscape architects, Act Urba, economy, OGE, ecology, REP, sociology

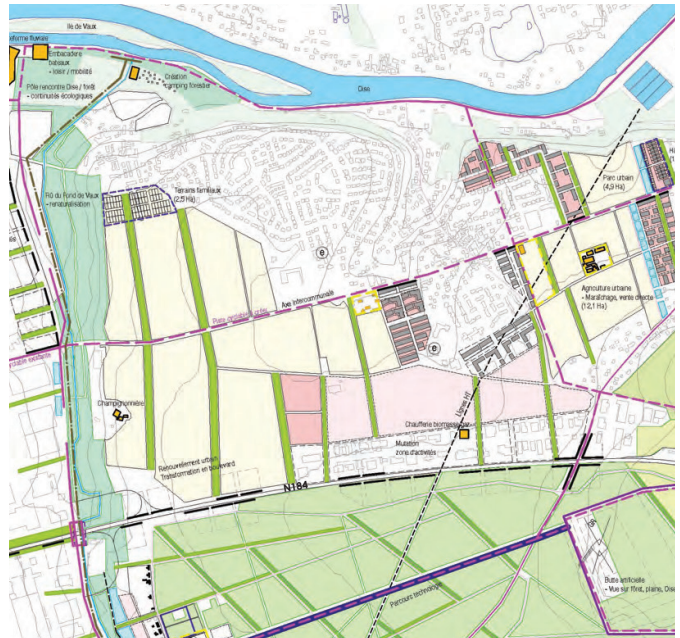




Quartier de Liesse



Quartier de Seine

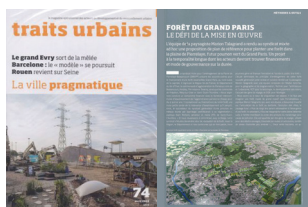


The Oise neighbourhood

Zoom on the new forest neighbourhoods

Creating the link between built up and natural area through the development of new forms of neighborhoods. Four sites have been identified, where innovative urban forms will orient the housing towards the new forest with the integration of local agriculture and existing urban structures.

Publications



Project : Plaine de Pierrelaye

Published in the article «Forêt du Grand Paris», revue «Traits Urbains» n°74 avril 2015, pages 41-43