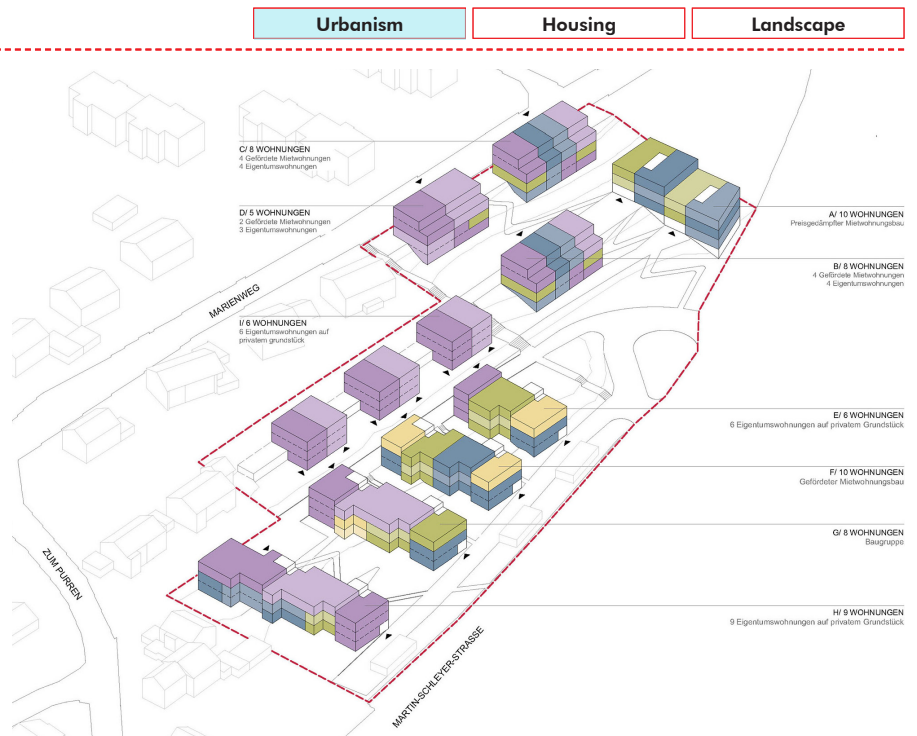


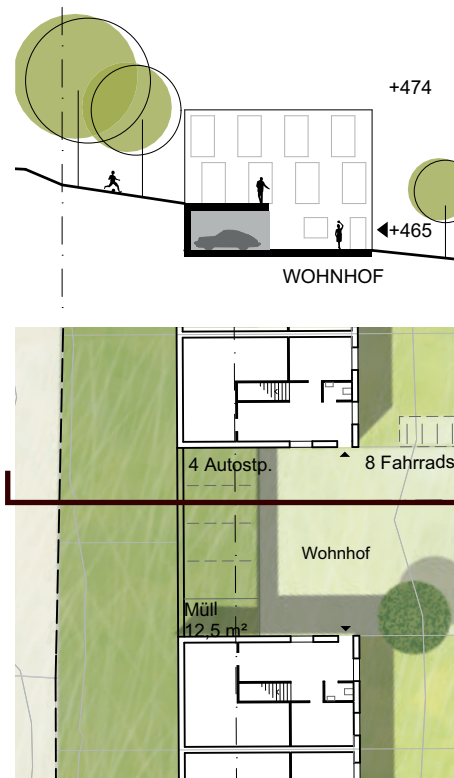
A new neighbourhood on the edge of the city

The leading principle for the conception of the new area is the combination of a built-up density, a high habitability quality and a high variety of housing for different populations and generations.

The landscaping is adapted to the topography. The offset arrangement of the buildings create a set of built-up and open spaces, offering a varied picture and preserve a beneficial permeability to housing and open spaces sunlight. As well, it offers views from accommodations on immediate environment and unique surroundings landscape. Each of the four proposed typologies deal with the theme of the integration in the slope to its way and generate different housing typologies.



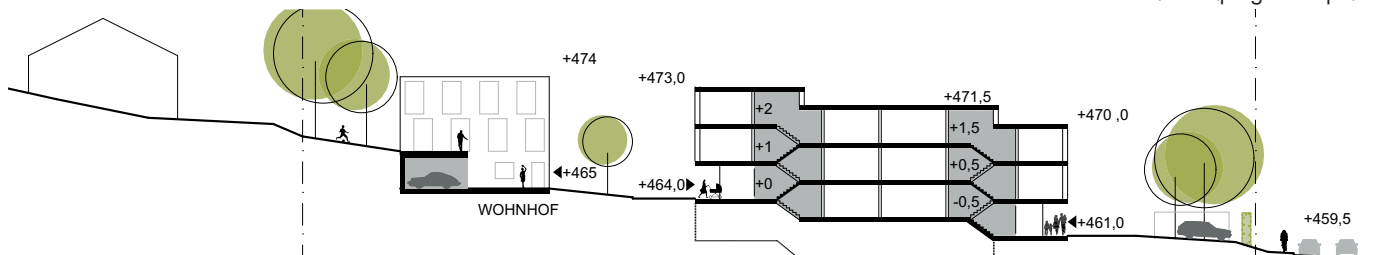
Breakdown of housing types



Details on semi-detached houses and their landscaped parking lots



Landscape ground plan



Insertion des bâtiments dans la pente

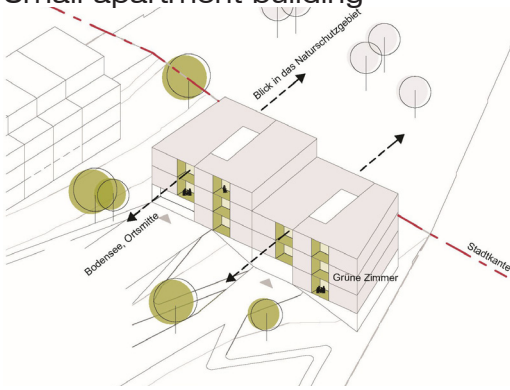
Competition: Urban, architectural project
 Surface: 1,5 ha
 Planning time: 2 months
 Client: City of Constance
 Location: Untere Laube 24 D-78462 Konstanz
 Programme: Urban densification
 Mission: Urban, architectural study

CONSTANCE - LITZELSTETTEN

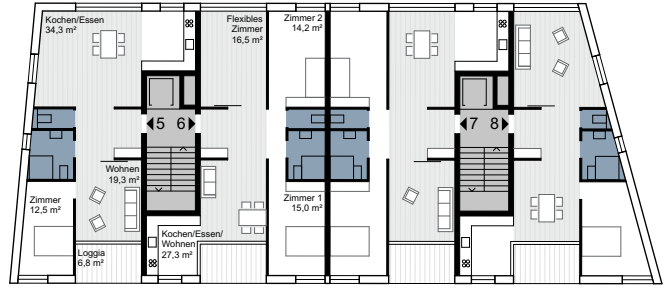
Construction of 80 logements - Constance 2017

RETHINK with Michael Gies (representative), architects, Philip Denking, landscape architect

Small apartment building

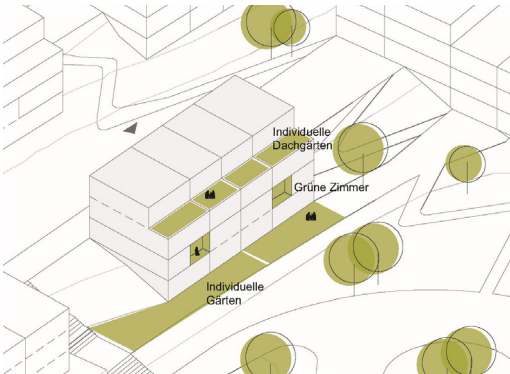


Landscape insertion

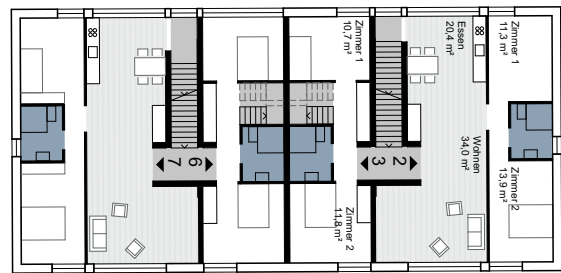


Second floor

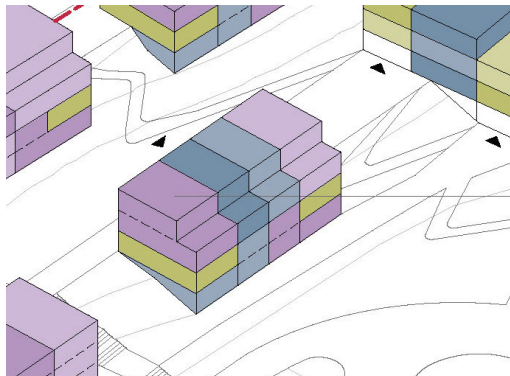
Semi-detached houses



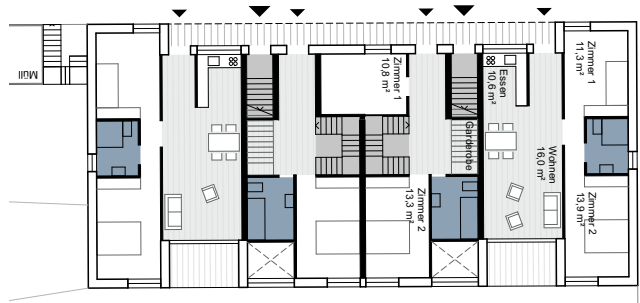
Landscape insertion



First floor



Breakdown of housing types



Ground floor

Housing typologies

The project concept claims a diversity of building typologies, from semi-detached houses to multi-storey residential buildings, for specific concepts and alternative organizational modes for housing (intergenerational housing, participatory models, etc.)