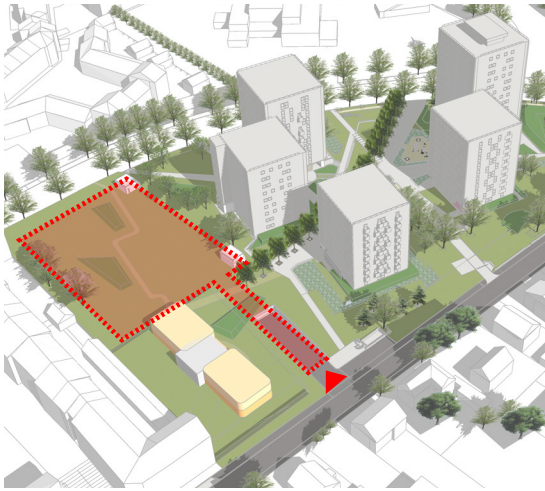


Reopening of La Hêtraie car park

The La Hêtraie underground car park has two levels and is vegetated on the surface. The structure has been closed since 2007 due to a drop in demand from residents. The car park suffers from rising groundwater on the second underground level, in addition to structural degradation.

With the ongoing redevelopment of the district (refurbishment of the residence, RETHINK architect, nursery in project...), the city and Paris Habitat plan the reopening for the residents and employees of nearby educational facilities. Our study proposes different scenarios for the partial or complete reopening of the car park, in view of the structural interventions, waterproofing and upgrading to the standards to be expected. An environmental component provides for the integration of soft mobility as well as an indoor and outdoor qualitative improvement (requalification of the access and fitness field on the ground floor, zenithal lighting...).



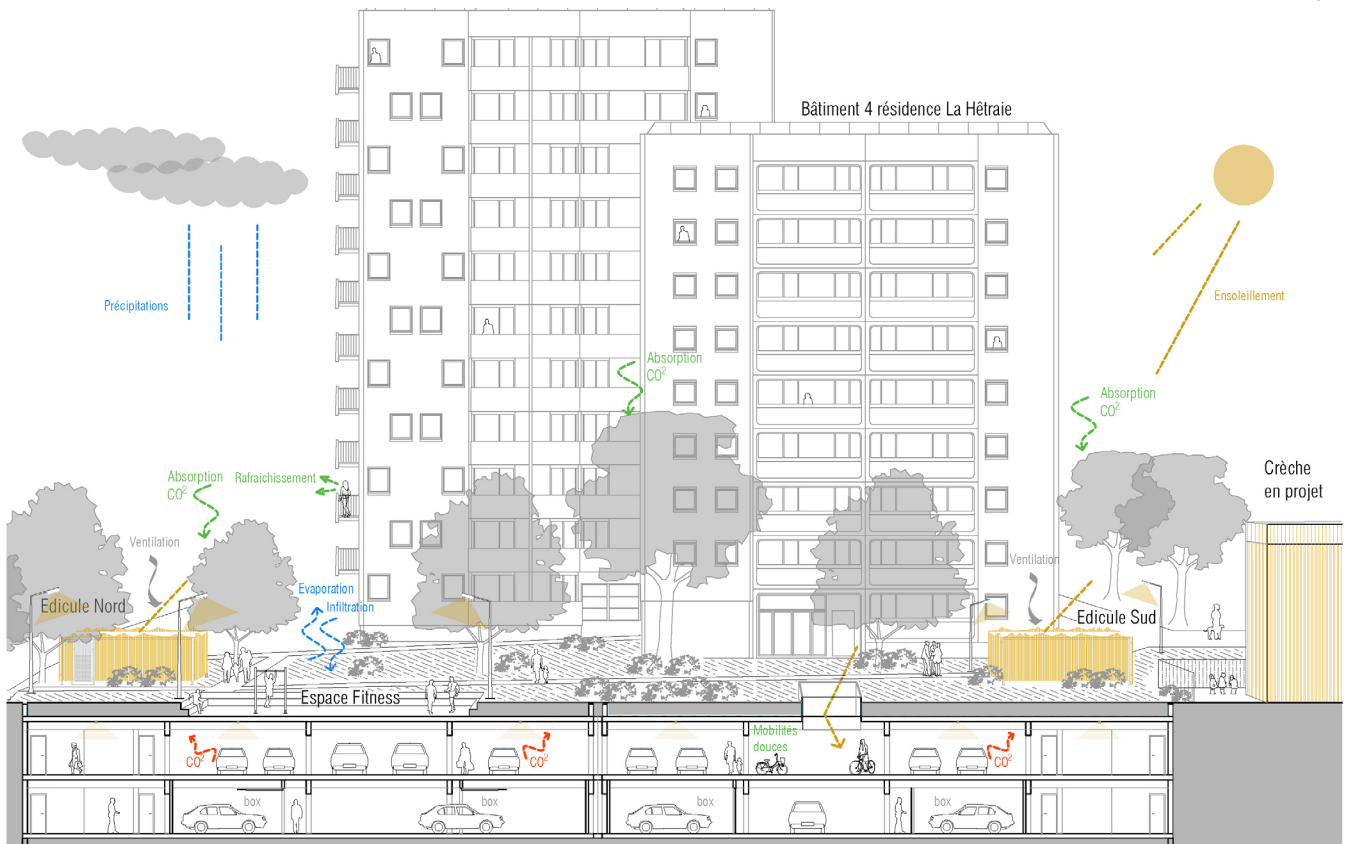
In red: Location of the green underground car park.



Inside of the underground parking



Underground reopening with diversification of uses: bicycles, scooters, EVCI terminals



Global environmental strategy, with requalification of the entrances and the green space on the surface.

Call for Tenders
 Surface: 4400m²
 Study duration: 3 months
 Client: Paris Habitat
 Location: 3 place Rodin, 94500 Champigny-sur-Marne
 Program: Restructuration of an underground car park
 Mission: feasibility study.

Delivered
 Planning fees HT: 18 k€
 Completion: 2022

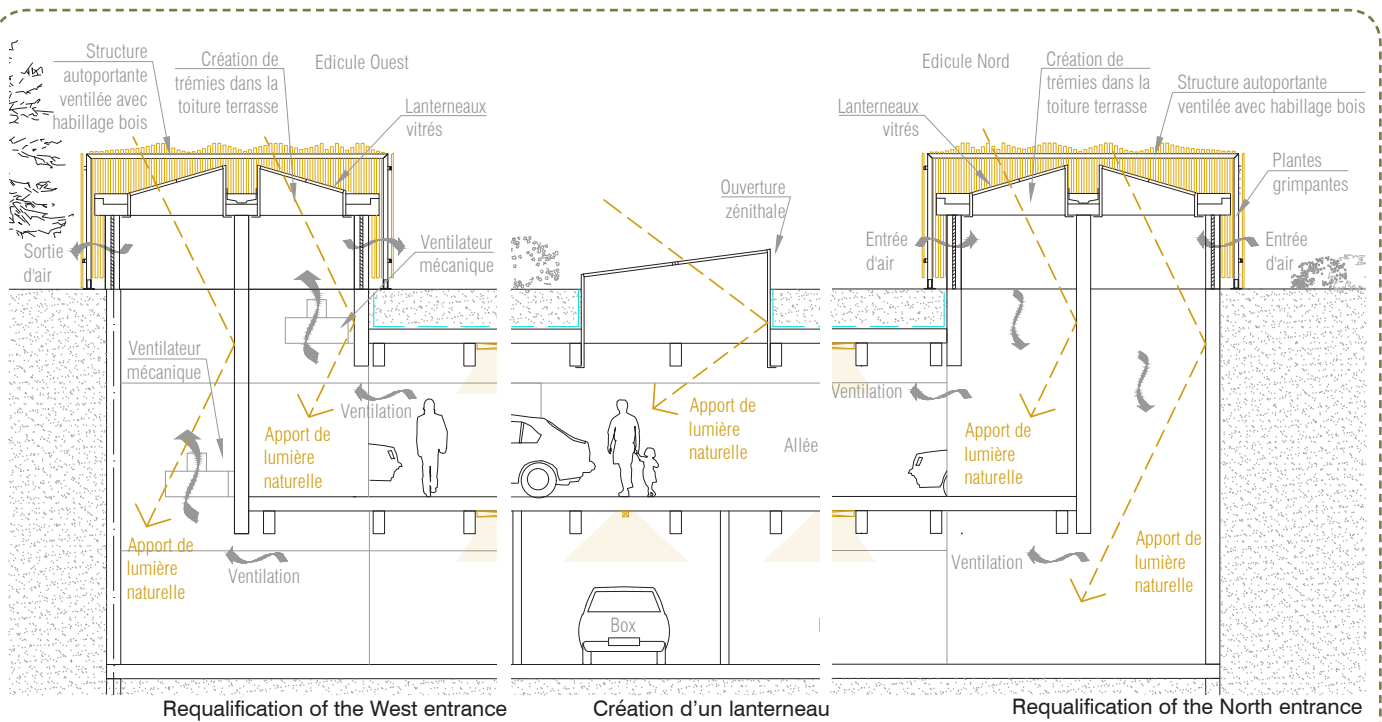


LA HÊTRAIE CAR PARK - PARIS HABITAT (94)

Restructuration of an underground car park - Limeil-Brevannes 2022

RETHINK (representative), JO&CO (engineering)

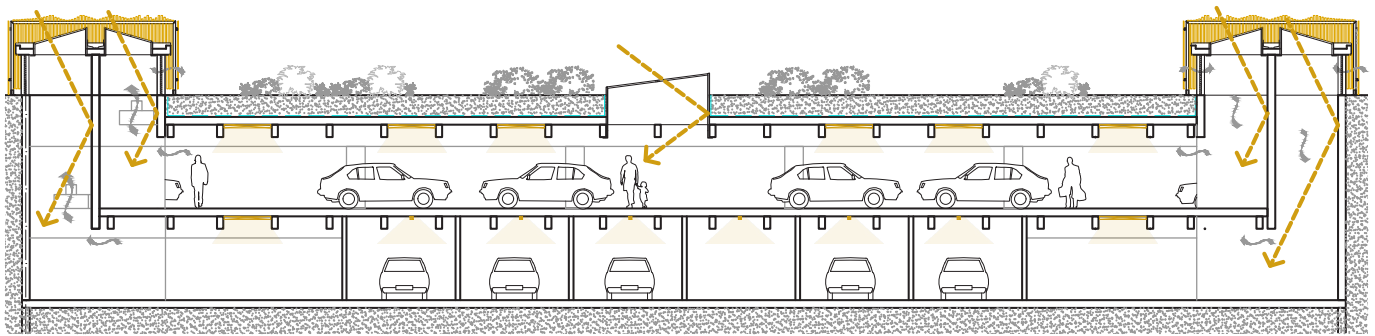




Requalification of the West entrance

Création d'un lanterneau

Requalification of the North entrance



Requalification architecturale et environnementale

We have proposed interventions to improve the architectural and environmental qualities of the car park for users, both inside and on the surface: installation of mechanical ventilation, creation of skylights to provide overhead light in the existing ventilation ducts or in the slab, improvement of the landscaping on the surface (plantations, sports ground, wooden cladding for the entrances).