

**A new resilient microcentrality in a flood zone**

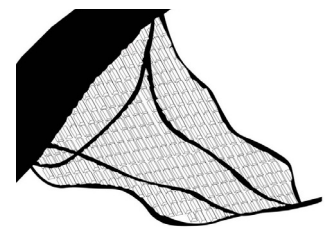
A rich program

The site is on the edge of the Touques river, close to an activity zone and residential hillsides. Situated in a flood-prone areas, we drew an urban and landscape micro-centrality with a mix of uses within a larger renaturated space.

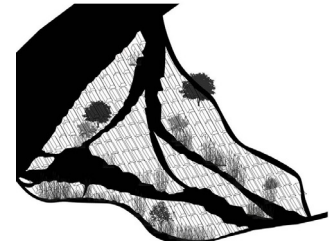
The project is composed of successive layers: the soil and the vegetation, the active ground floors raised on stilts with their public spaces and the flats on the upper floors. We initiated a renaturation process under the action of water, which would gradually dig into the ground to create different smaller streams; and reconstruct a humid landscape in the old lower bed of the Touques. The project promotes living together that respects natural spaces, a life at the rhythm of water.



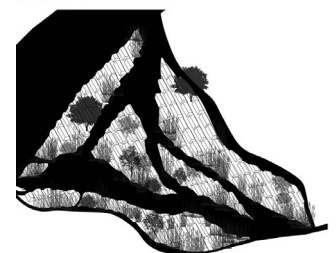
Ground-floor plan



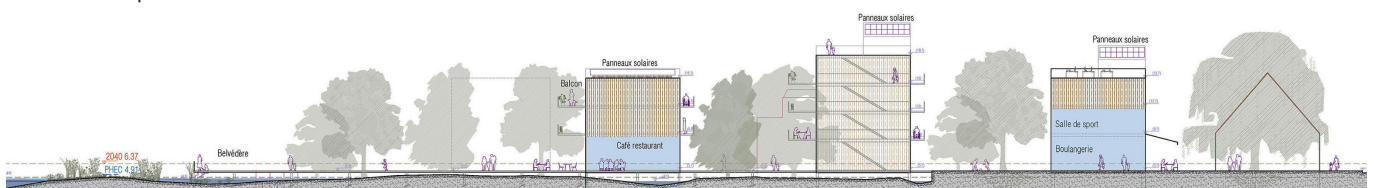
Phase 2



Phase 3



Wetland site renaturation process



Restricted Competition Submitted  
 Surface: 2.5 Ha Planning fees BT: 2 k€  
 Study duration: (2 months) Completion: (2021)  
 Client: Ministry of Ecological Transition.  
 246 Boulevard Saint-Germain, 75007 Paris  
 Lieu: 17 rue du dr Lainé, F-14800 Touques  
 Programme: Living in flood zones  
 Mission: Idea competition.

**AMITER CŒUR CÔTE FLEURIE – PUCA (MTE)**

Urban renewal in flood-prone areas – Touques 2021

Rethink (representative) with Urban Water (hydrology), Praxys (landscape architect)





A belvedere and a meeting space on the banks of Touques



Zoom on the public pedestrian bridge

## The footbridge: a lively and landscaped public space

The urbanization is concentrated along the existing street and a new transverse axis (pedestrian walkway), as a link between La Touques and the hillsides and then the hinterland. At the end of this axis, a landscaped meeting space on the banks of Touques.