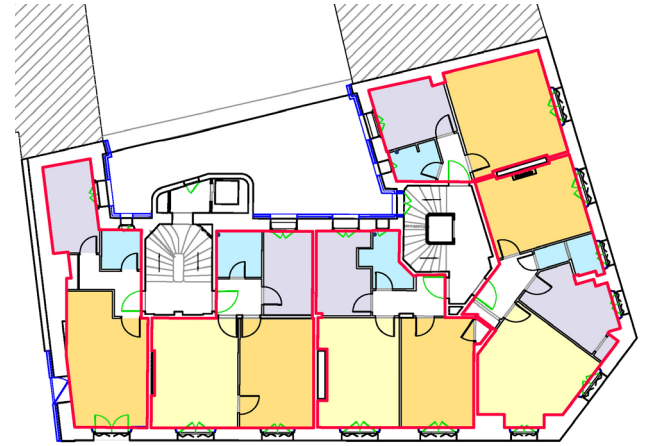




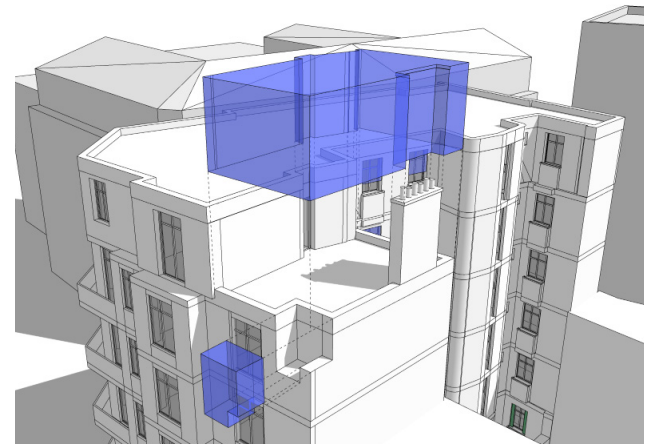
The building in its context



Current story - distribution of typologies



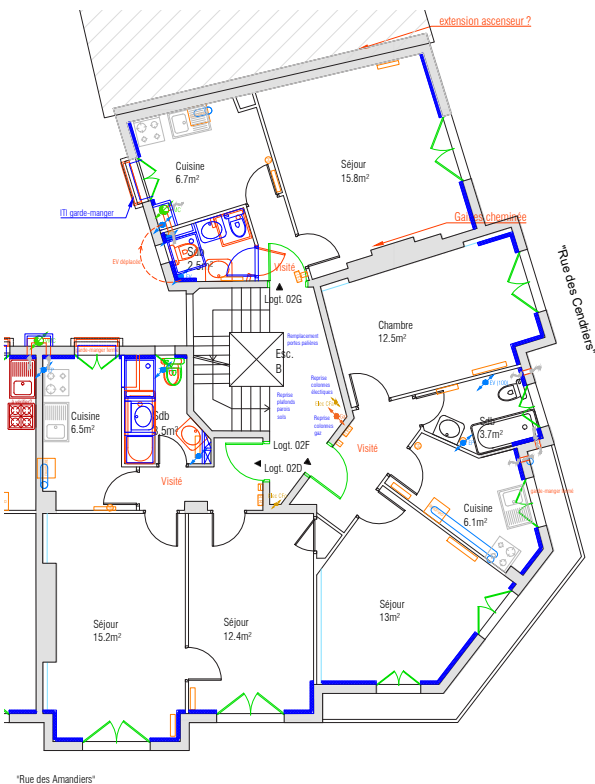
View from rue des Amandiers - Sun protection and over-elevation



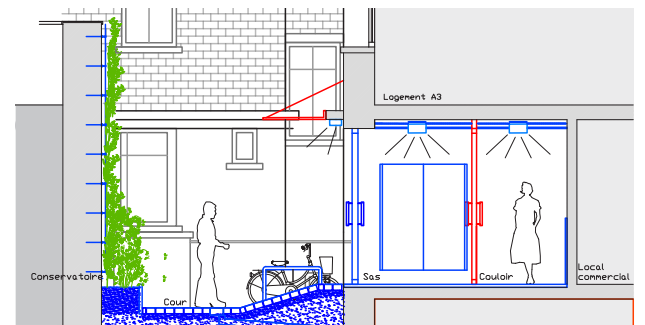
R+6 - Wooden over-elevation, creation of a new dwelling

Rehabilitation of a flat building from 1934

The apartment building is located in the Amandiers district in the 20th arrondissement of Paris. The flats, the common areas, the interior courtyard as well as the south gable are reworked. We propose the creation of new openings on the South facade for more comfort. We propose to transform the only flat on the first floor in office premises by creating a new access on the south facade. On the courtyard side, we are proposing a permeable pavement, a new access ramp and partial greening of the dividing wall. In the context of summer comfort and sun protection, we are considering the installation of blinds from R+2 to R+6 facing east, west and south, the overhaul of existing metal shutters at R+1 and RDC and the installation of exterior insulation on the secondary facades.



Diagnostic plan, current floor, staircase B



Section on the inner courtyard

Call for Tenders  
 Surface: 26 flats  
 Construction: (12 months)  
 Client: Paris Habitat  
 Location: 3 place Rodin, 94500 Champigny-sur-Marne  
 Program: 75 rue des Amandiers, 75 020 Paris  
 Mission: Rehabilitation of an appartement building.  
 Diagnostic

Study phase  
 Building costs BT: 1 200 k€  
 Completion: (2025)

**75 RUE DES AMANDIERS - PARIS HABITAT (75)**

Refurbishment of an apartment building - Paris 2023

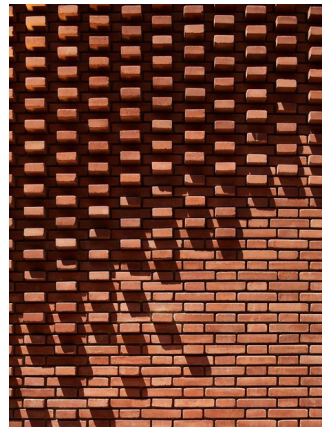
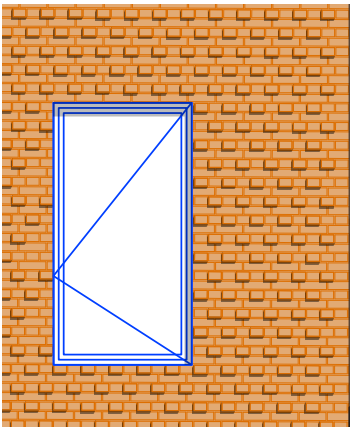
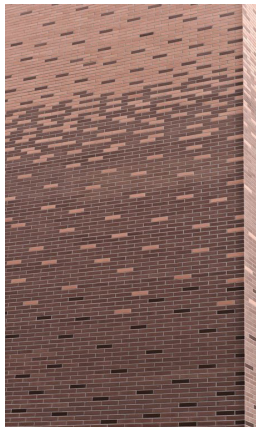
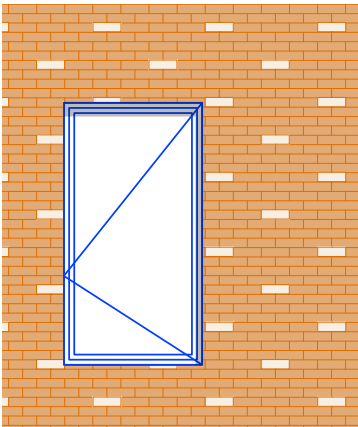


RETHINK (Representative)



South facade - Rue Louis-Nicolas Clérambault

West facade - Rue des Amandiers



Layout proposals for the South gable with a contemporary reinterpretation of the traditional brick facade

**Rewriting of the storefront - Materiality**

For the south gable on rue Louis-Nicolas Clérambault, we are proposing a brick facing to return the main façade. A work with the material of the main facade (brick), the contrast of colors, surfaces (matt/gloss) or relief with a contemporary approach.